



PAL RUBBER INDUSTRIES

EXPERIENCE
THE
DIFFERENCE

Introduction

THE COMPANY

Pal Rubber Industries is a company in the crown state Haryana of india, where Research, Development and Customer Orientation have come together, to manufacture and supply the highest quality retreading materials.

THE PRODUCTS

PRECURED TREAD RUBBER

Pal Rubber Industries has entered in product manufacturing with its first product of conventional and Precured Tread Rubber. We are fully equipped to manufacture treads in all sizes suitable for tyres of diferent uses. These are made from the finest natural rubber and synthetic rubber to with stand the hardest road conditions. Produced under strict quality controls, consistence of quality is tested in well-equipped laboratory attached to the factory.

Pal Rubber Industries has a quality control system that insures that after machine buffing, every strip of PCT is hand-finished and inspected before being packed.

MOULD CURE RUBBER (Conventional Tread Rubber)

Pal Rubber Industries Mould Cure Rubber with Cushion backing has been formulated and developed in our labs to give your tyre miles and miles of extra life. Tread rubber with PAL TREAD is available in every size and guage.

CUSHION GUM AND BONDING GUM

fast curing and slow curing repair material and Vulcanizing gums are made to suit 99° C, 125°C and 150°C temperature levels.

THE SERVICE

UNCOMPROMISING QUALITY

Besides the latest technology. Pal Rubber Industries has a quality control system that ensures quality at every stage of production.

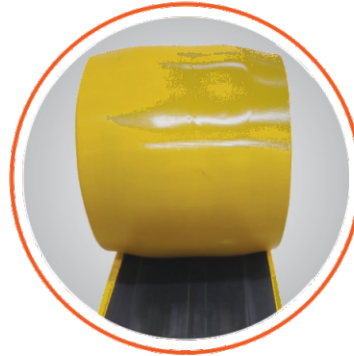
DISTRIBUTION NETWORKS

A distribution network that at present reaches throughout of India.

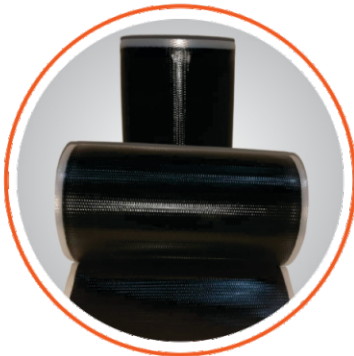
Product Range



Precured Tread
(Cold Rubber)



Tread Rubber
(Hot Rubber)



Hot Cusion Gum



Bonding Gum



CT Patches



BP Patches

Treads

AJAX



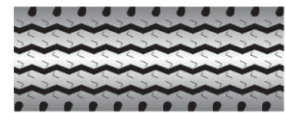
Code	Tread Size	Base Width (mm)	Tread Depth (mm)	Base Thickness (mm)	Total Thickness (mm)	Strip Length (inch)	Weight per strip (Kg.)
P-501	1000X20	203	10.0	4.0	14.0	128	9.600
P-502	1000X20H	205	13.0	3.5	16.5	126	11.200
P-503	900X20	186	12.0	3.5	15.5	124	9.300
P-504	750X16	160	12.0	3.0	15.0	98	5.800
P-505	750X16	150	10.0	3.0	13.0	98	5.200
P-506	600X16	120	9.0	3.0	12.0	87	3.600
P-507	900X16	186	12.0	3.5	15.5	110	8.100
P-508	700X15	150	10.0	3.0	13.0	93	4.900

ROAD STAR



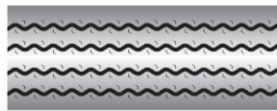
Code	Tread Size	Base Width (mm)	Tread Depth (mm)	Base Thickness (mm)	Total Thickness (mm)	Strip Length (inch)	Weight per strip (Kg.)
P-569	1000X20	205	13.5	3.5	17.0	127	11.200

M-11



Code	Tread Size	Base Width (mm)	Tread Depth (mm)	Base Thickness (mm)	Total Thickness (mm)	Strip Length (inch)	Weight per strip (Kg.)
P-593	1000X20	205	14.0	3.5	17.5	127	11.300

APOLLO



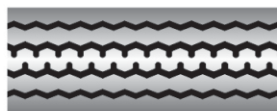
Code	Tread Size	Base Width (mm)	Tread Depth (mm)	Base Thickness (mm)	Total Thickness (mm)	Strip Length (inch)	Weight per strip (Kg.)
P-509	1000X20	205	11.0	3.0	14.0	128	10.200
P-510	825X20	170	11.5	3.0	14.5	120	7.700
P-511	825X16	170	11.5	3.0	14.5	102	6.700
P-512	750X16	160	11.0	3.0	14.0	98	5.800
P-513	600X16	125	10.0	3.0	13.0	87	3.700
P-572	155X12D	125	10.0	3.0	13.0	136	5.800

EH



Code	Tread Size	Base Width (mm)	Tread Depth (mm)	Base Thickness (mm)	Total Thickness (mm)	Strip Length (inch)	Weight per strip (Kg.)
P-548	1000X20	205	14.0	3.5	17.5	127	10.700

RIB



Code	Tread Size	Base Width (mm)	Tread Depth (mm)	Base Thickness (mm)	Total Thickness (mm)	Strip Length (inch)	Weight per strip (Kg.)
P-545	900X20	187	12.5	3.5	16.0	123	9.400
P-546	900X16	187	12.5	3.5	16.0	110	8.200
P-547							

HWR



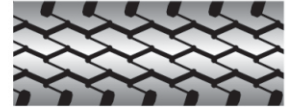
Code	Tread Size	Base Width (mm)	Tread Depth (mm)	Base Thickness (mm)	Total Thickness (mm)	Strip Length (inch)	Weight per strip (Kg.)
P-586	1000x20	205	14.0	4.0	18.0	127	13.000

Z-LUG



Code	Tread Size	Base Width (mm)	Tread Depth (mm)	Base Thickness (mm)	Total Thickness (mm)	Strip Length (inch)	Weight per strip (Kg.)
P-514	1000X20	205	13.5	3.5	17.0	126	11.000
P-515							
P-516							

P.T.



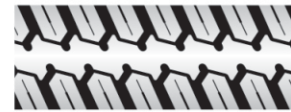
Code	Tread Size	Base Width (mm)	Tread Depth (mm)	Base Thickness (mm)	Total Thickness (mm)	Strip Length (inch)	Weight per strip (Kg.)
P-527	1000X20	200	11.0	3.5	14.5	127	10.000
P-528	825X20	170	12.0	3.0	15.0	116	8.000
P-529	825X16	170	12.0	3.0	15.0	103	7.000
P-530							

SLM Semilug



Code	Tread Size	Base Width (mm)	Tread Depth (mm)	Base Thickness (mm)	Total Thickness (mm)	Strip Length (inch)	Weight per strip (Kg.)
P-517	1000X20	205	13.0	3.5	16.5	126	10.600
P-518	825X20	165	11.5	3.5	15.0	116	7.600
P-519	825X16	165	11.5	3.5	15.0	103	6.700
P-520	750X16	150	10.0	3.0	13.0	98	5.200
P-521	1000X20	205H	15.0	4.0	19.0	127	12.000
P-573	900X20	187	13.5	3.5	17.0	124	9.500
P-574	825X20	175	13.0	3.0	16.0	116	8.200
P-575	825X16	175	13.0	3.0	16.0	103	7.200
P-576	750X16	158	12.0	3.0	15.0	98	5.800
P-577	700X15	140	12.0	3.0	15.0	91	4.500
P-578	600X16	128	10.0	3.0	13.0	87	3.600
P-606	900X16	187	13.5	3.5	17.0	110	8.300
P-623	700X15	150	10.0	3.0	13.0	93	4.900

SL LUG



Code	Tread Size	Base Width (mm)	Tread Depth (mm)	Base Thickness (mm)	Total Thickness (mm)	Strip Length (inch)	Weight per strip (Kg.)
P-533	1000X20	205	14.0	3.5	17.5	126	11.100
P-534	155X13	120	9.0	2.5	11.5	69	2.500
P-595	825X20	170	12.5	3.0	15.5	116	8.000
P-596	825X16	170	12.5	3.0	15.5	105	7.000

CT



Code	Tread Size	Base Width (mm)	Tread Depth (mm)	Base Thickness (mm)	Total Thickness (mm)	Strip Length (inch)	Weight per strip (Kg.)
P-535	1000X20	205	14.0	4.0	18.0	128	11.000
P-536	825X20	170	11.5	3.5	15.0	116	8.000
P-537	825X16	170	11.5	3.5	15.0	103	7.000

JT TRACK MASTER



Code	Tread Size	Base Width (mm)	Tread Depth (mm)	Base Thickness (mm)	Total Thickness (mm)	Strip Length (inch)	Weight per strip (Kg.)
P-522	1000X20	205	12.0	3.5	15.5	126	10.300
P-523	750X16	160	12.5	3.0	15.5	98	6.000
P-524	1000X20	205	15.0	4.0	19.0	127	12.300
P-525	825X20	170	13.5	3.0	16.5	116	8.000
P-526	825X16	170	13.5	3.0	16.5	104	7.000
P-605	1000x20	205	14.5	3.5	18.0	127	11.300

CLP



Code	Tread Size	Base Width (mm)	Tread Depth (mm)	Base Thickness (mm)	Total Thickness (mm)	Strip Length (inch)	Weight per strip (Kg.)
P-549	1000X20	205	14.0	3.5	17.5	126	10.600
P-550							

Treads

ZY-MAX
Maximus



Code	Tread Size	Base Width (mm)	Tread Depth (mm)	Base Thickness (mm)	Total Thickness (mm)	Strip Length (inch)	Weight per strip (Kg.)
P-538	1000X20	205	13.5	3.5	17.0	125	10.700
P-539							

SUPER LUG



Code	Tread Size	Base Width (mm)	Tread Depth (mm)	Base Thickness (mm)	Total Thickness (mm)	Strip Length (inch)	Weight per strip (Kg.)
P-608	1000X20	210	13.5	3.5	17.0	128	11.500

CLT



Code	Tread Size	Base Width (mm)	Tread Depth (mm)	Base Thickness (mm)	Total Thickness (mm)	Strip Length (inch)	Weight per strip (Kg.)
P-543	900X20	186	14.0	3.5	17.5	123	9.600
P-544	900X16	186	14.0	3.5	17.5	110	8.400

TF SURTAJ



Code	Tread Size	Base Width (mm)	Tread Depth (mm)	Base Thickness (mm)	Total Thickness (mm)	Strip Length (inch)	Weight per strip (Kg.)
P-564	600X16	128	13.5	3.0	16.5	87	3.700

LUG MASTER



Code	Tread Size	Base Width (mm)	Tread Depth (mm)	Base Thickness (mm)	Total Thickness (mm)	Strip Length (inch)	Weight per strip (Kg.)
P-570	1000X20	205	17.0	4.0	21.0	127	12.000
P-609	1000X20	210	14.5	3.5	18.0	128	12.200

TF PLAN



Code	Tread Size	Base Width (mm)	Tread Depth (mm)	Base Thickness (mm)	Total Thickness (mm)	Strip Length (inch)	Weight per strip (Kg.)
P-565	600X16	125	13.5	3.0	16.5	87	3.800

LUG MASTER



Code	Tread Size	Base Width (mm)	Tread Depth (mm)	Base Thickness (mm)	Total Thickness (mm)	Strip Length (inch)	Weight per strip (Kg.)
P-589	1000X20H	205	19.0	4.0	23.0	128	13.1

T.F. CUT
Tractor Front



Code	Tread Size	Base Width (mm)	Tread Depth (mm)	Base Thickness (mm)	Total Thickness (mm)	Strip Length (inch)	Weight per strip (Kg.)
P-566	600X16	125	13.0	3.0	16.0	87	3.500
P-580	750X16	155	13.0	3.0	16.0	98	5.500
P-588	600X16	128	15.0	4.0	19.0	87	4.200

PL



Code	Tread Size	Base Width (mm)	Tread Depth (mm)	Base Thickness (mm)	Total Thickness (mm)	Strip Length (inch)	Weight per strip (Kg.)
P-584	1000X20	205	18.0	4.0	22.0	127	12.500
P-620	1000X20	215	15.0	4.0	19.0	130	14.000
P-627	1100X20	225	17.0	4.0	21.0	134	15.700
P-628	1000X20	225	17.0	4.0	21.0	129	15.300
P-629	1000X20	210	17.0	4.0	21.0	128	14.300

MINES



Code	Tread Size	Base Width (mm)	Tread Depth (mm)	Base Thickness (mm)	Total Thickness (mm)	Strip Length (inch)	Weight per strip (Kg.)
P-540	1000X20	205	14.5	3.5	18.0	127	11.300

GRIP LUG



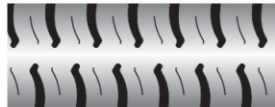
Code	Tread Size	Base Width (mm)	Tread Depth (mm)	Base Thickness (mm)	Total Thickness (mm)	Strip Length (inch)	Weight per strip (Kg.)
P-542	1000X20	205	13.5	3.5	17.0	127	10.200

MINES LUG



Code	Tread Size	Base Width (mm)	Tread Depth (mm)	Base Thickness (mm)	Total Thickness (mm)	Strip Length (inch)	Weight per strip (Kg.)
P-585	1000X20	205	19.0	4.0	23.0	127	14.000
P-591	1000X20	220	20.0	4.0	24.0	130	16.000
P-592	1100X20	220	20.0	4.0	24.0	134	16.800
P-604	1200X20	240	21.5	4.5	27.0	147	18.000

SLG



Code	Tread Size	Base Width (mm)	Tread Depth (mm)	Base Thickness (mm)	Total Thickness (mm)	Strip Length (inch)	Weight per strip (Kg.)
P-556	825X20	170	11.0	3.0	14.0	117	7.800
P-557	825X16	170	11.0	3.0	14.0	102	6.700

P TITANIC



Code	Tread Size	Base Width (mm)	Tread Depth (mm)	Base Thickness (mm)	Total Thickness (mm)	Strip Length (inch)	Weight per strip (Kg.)
P-594	1200X20	240	21.5	4.5	26.0	147	20.500
P-621	1000X20	205	14.0	4.0	18.0	128	11.500
P-622	1000X20	210	16.5	4.0	20.5	128	13.000

P - TITAN



Code	Tread Size	Base Width (mm)	Tread Depth (mm)	Base Thickness (mm)	Total Thickness (mm)	Strip Length (inch)	Weight per strip (Kg.)
P-634	1000X20	220	14.0	4.0	18.0	128	12.200
P-635	1000X20	210	13.0	4.0	17.0	128	10.800
P-636	900X20	197	13.0	4.0	17.0	124	9.500
P-637	825X20	177	12.5	3.5	16.0	118	8.000
P-638	825X16	177	12.5	3.5	16.0	105	7.000

MINE

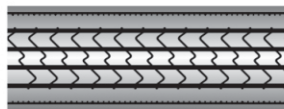
MINE SPECIAL



Code	Tread Size	Base Width (mm)	Tread Depth (mm)	Base Thickness (mm)	Total Thickness (mm)	Strip Length (inch)	Weight per strip (Kg.)
P-587	1000X20	205	16.0	4.0	20.0	127	12.600
P-541	900X20	187	13.5	3.5	17.0	124	9.800
P-579	750X16	155	12.0	3.0	15.0	98	5.500
P-607	900X16	187	13.5	3.5	17.0	110	8.600
P-639	1000X20	215	13.0	4.0	17.0	128	11.400
P-640	1000X20	210	13.0	4.0	17.0	128	10.900
P-641	900X20	197	12.5	4.0	16.5	124	9.500
P-642	825X20	177	12.5	3.5	16.0	118	8.000
P-643	825X16	177	12.5	3.5	16.0	105	7.000

Treads

PL RADIAL



Code	Tread Size	Base Width (mm)	Tread Depth (mm)	Base Thickness (mm)	Total Thickness (mm)	Strip Length (inch)	Weight per strip (Kg.)
P-531	1000X20	215	11.5	3.5	15.0	128	11.300
P-532							

M-10



Code	Tread Size	Base Width (mm)	Tread Depth (mm)	Base Thickness (mm)	Total Thickness (mm)	Strip Length (inch)	Weight per strip (Kg.)
P-551	1000X20	210	14.0	4.0	18.0	128	10.300
P-552	1100X20	210	14.0	4.0	18.0	134	11.000

JDH



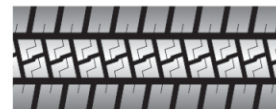
Code	Tread Size	Base Width (mm)	Tread Depth (mm)	Base Thickness (mm)	Total Thickness (mm)	Strip Length (inch)	Weight per strip (Kg.)
P-553	1000X20	210	13.5	3.0	16.5	128	11.000
P-554	1000X20	220	13.5	3.0	16.5	130	12.200
P-555							

PVN



Code	Tread Size	Base Width (mm)	Tread Depth (mm)	Base Thickness (mm)	Total Thickness (mm)	Strip Length (inch)	Weight per strip (Kg.)
P-571	1000X20	220	14.0	4.0	18.0	130	12.200
P-614	825X20	177	13.0	3.0	16.0	116	8.200
P-615	825X16	177	13.0	3.0	16.0	105	7.200

APPOLO LD



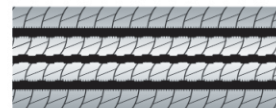
Code	Tread Size	Base Width (mm)	Tread Depth (mm)	Base Thickness (mm)	Total Thickness (mm)	Strip Length (inch)	Weight per strip (Kg.)
P-583	1000X20	215	13.5	3.5	17.0	130	11.900
P-597	1000X20	220	14.0	3.5	17.5	130	12.200
P-598	825x20	177	12.5	3.0	15.5	116	8.200
P-599	825x16	177	12.5	3.0	15.5	105	7.200
P-600	1100x20	230	13.5	3.5	17.0	134	12.400
P-601	1000x20	230	13.5	3.5	17.0	130	12.000
P-626	1000x20	210	13.5	3.5	17.0	128	11.200

M-24



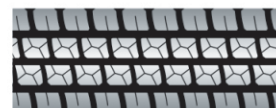
Code	Tread Size	Base Width (mm)	Tread Depth (mm)	Base Thickness (mm)	Total Thickness (mm)	Strip Length (inch)	Weight per strip (Kg.)
P-602	1100X20	220	13.5	3.3	16.8	134	12.200
P-603	1000X20	220	13.5	3.3	16.8	128	11.800
P-616	1000X20	203	12.5	3.5	16.0	124	10.500
P-617	1000X20	215	13.0	3.5	16.5	128	11.500

P-1 (One)



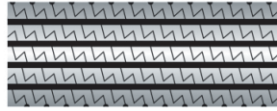
Code	Tread Size	Base Width (mm)	Tread Depth (mm)	Base Thickness (mm)	Total Thickness (mm)	Strip Length (inch)	Weight per strip (Kg.)
P-624	1000X20	215	13.0	4.0	17.0	128	11.800
P-625	1000X20	225	13.0	3.5	16.5	130	12.100
P-610	1000X20	240	13.0	3.5	16.5	130	12.700

JDP



Code	Tread Size	Base Width (mm)	Tread Depth (mm)	Base Thickness (mm)	Total Thickness (mm)	Strip Length (inch)	Weight per strip (Kg.)
P-618	1000X20	215	13.5	3.5	17.0	128	11.500

P-27



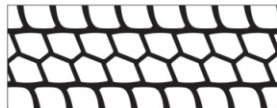
Code	Tread Size	Base Width (mm)	Tread Depth (mm)	Base Thickness (mm)	Total Thickness (mm)	Strip Length (inch)	Weight per strip (Kg.)
P-619	1000X20	215	13.5	3.5	17.0	128	11.500

P 16



Code	Tread Size	Base Width (mm)	Tread Depth (mm)	Base Thickness (mm)	Total Thickness (mm)	Strip Length (inch)	Weight per strip (Kg.)
P-613	1000X20	215	13.5	3.5	17.0	128	11.400

PH



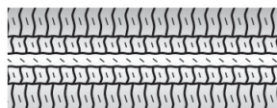
Code	Tread Size	Base Width (mm)	Tread Depth (mm)	Base Thickness (mm)	Total Thickness (mm)	Strip Length (inch)	Weight per strip (Kg.)
P-631	1000X20	220	14.0	4.0	18.0	128	12.300
P-632	1000X20	230	14.0	4.0	18.0	128	12.700
P-633	1100X20	230	14.0	4.0	18.0	132	13.100

APPOLO DURA



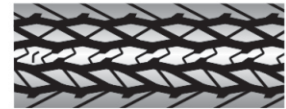
Code	Tread Size	Base Width (mm)	Tread Depth (mm)	Base Thickness (mm)	Total Thickness (mm)	Strip Length (inch)	Weight per strip (Kg.)
P-581	700X15	148	10.0	3.0	13.0	91	4.400

ASTRO



Code	Tread Size	Base Width (mm)	Tread Depth (mm)	Base Thickness (mm)	Total Thickness (mm)	Strip Length (inch)	Weight per strip (Kg.)
P-582	78x15	156	10.0	3.0	13.0	89	4.500
P-590	700x15	140	10.0	3.0	13.0	87	4.300

BRUTE



Code	Tread Size	Base Width (mm)	Tread Depth (mm)	Base Thickness (mm)	Total Thickness (mm)	Strip Length (inch)	Weight per strip (Kg.)
P-558	700X15	145	10.0	4.0	14.0	94	4.300
P-559							
P-560							

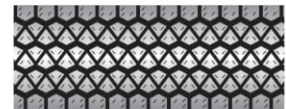
ROVER

Jeep



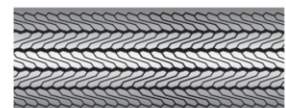
Code	Tread Size	Base Width (mm)	Tread Depth (mm)	Base Thickness (mm)	Total Thickness (mm)	Strip Length (inch)	Weight per strip (Kg.)
P-561	600X16	125	9.5	3.0	12.5	87	3.500

DIAMOND



Code	Tread Size	Base Width (mm)	Tread Depth (mm)	Base Thickness (mm)	Total Thickness (mm)	Strip Length (inch)	Weight per strip (Kg.)
P-562	78X15	175	8.5	3.0	11.5	88	4.400

OPTIMA

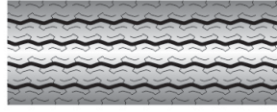


Code	Tread Size	Base Width (mm)	Tread Depth (mm)	Base Thickness (mm)	Total Thickness (mm)	Strip Length (inch)	Weight per strip (Kg.)
P-567	600X16	120	10.0	3.0	13.0	88	3.500

Treads

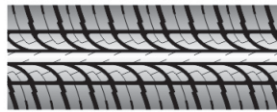
SW-99

MARUTI

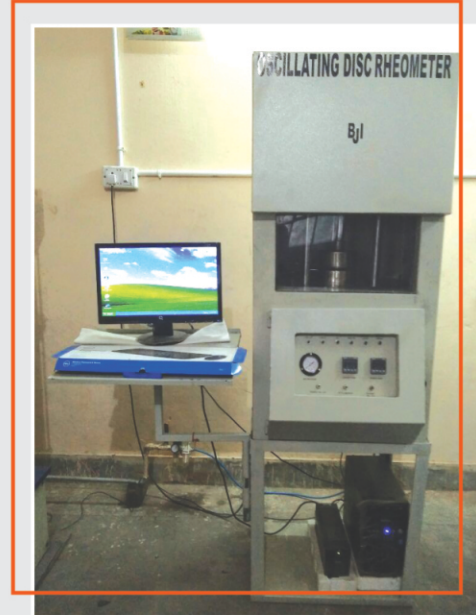


Code	Tread Size	Base Width (mm)	Tread Depth (mm)	Base Thickness (mm)	Total Thickness (mm)	Strip Length (inch)	Weight per strip (Kg.)
P-563	450X10	100	7.5	2.0	9.5	127	3.300

RADIAL



Code	Tread Size	Base Width (mm)	Tread Depth (mm)	Base Thickness (mm)	Total Thickness (mm)	Strip Length (inch)	Weight per strip (Kg.)
P-568	145X12	125	7.0	2.5	9.5	128	4.000





EXPERIENCE
THE
DIFFERENCE

Deals in :

Precured Tread Rubber, Tread Rubber,
Cushion Gum (Hot & Cold),
Hot Rubber, Cold Rubber,
UTS, Patches Etc.

PAL RUBBER
INDUSTRIES

BAHADURGARH, HARYANA